

The Challenges Facing Our Community

Below are the breakdown statistics for each of the major issues that the city of Los Angeles and California endures.

Drop Out <http://data1.cde.ca.gov/dataquest/>

The following Dropout statistics were gathered from the California Department of Education Educational Demographics Office.

Dropouts by Ethnic Designation
Los Angeles County for the Year 2006-07
(Reported and Adjusted)

Los Angeles County

American Indian or Alaska Native	Asian	Pacific Islander	Filipino	Hispanic or Latino	African American	White	Multiple
69 (4.5%)	492 (1.1%)	120 (5.7%)	271 (2.1%)	16,143 (5.3%)	3,663 (6.4%)	2,241 (2.4%)	621 (6.3%)

Los Angeles Unified School District

American Indian or Alaska Native	Asian	Pacific Islander	Filipino	Hispanic or Latino	African American	White	Multiple
34 (5.4%)	195 (2.3%)	38 (5.8%)	150 (3.0%)	8,674 (6.0%)	1,856 (7.1%)	674 (3.4%)	387 (21.7%)

Taggin/Graffiti Vandalism

Los Angeles County

http://www.sfgov.org/site/uploadedfiles/bdsupvrs/leganalyst/OLA_034-04_Graffiti_Prevention.pdf and <http://www.lacity.org/bpw/ocb/gr.html>

The Los Angeles County Public Works Department employs an unconventional but successful program in the unincorporated parts of Los Angeles County. Ten years ago, new Director Valerie Hill introduced a plan to the Board of Supervisors to privatize the County's graffiti removal program. The County now approves \$2 million in annual contracts with contractors who competitively bid to remove graffiti in designated quadrants of the County. Contractors are paid annually (with two, one-year extension options) and are paid a flat annual fee rather than a cost per square foot of removal. The \$3 million program is paid for through a combination of federal community development funds, designated road district funds, and discretionary funds appropriated by the Board of Supervisors. According to Ms. Hill, privatization has reduced the County's removal costs to between 8 and 13 cents per square foot, with 98 percent of all graffiti removed within 48 hours of a work order complaint.

City of Los Angeles Board of Public Works <http://www.lacity.org/bpw/ocb/gr.html>

Fiscal Year 2007-08 (July to June)

GRAFFITI ABATEMENT STATISTICS CITYWIDE INCIDENTS

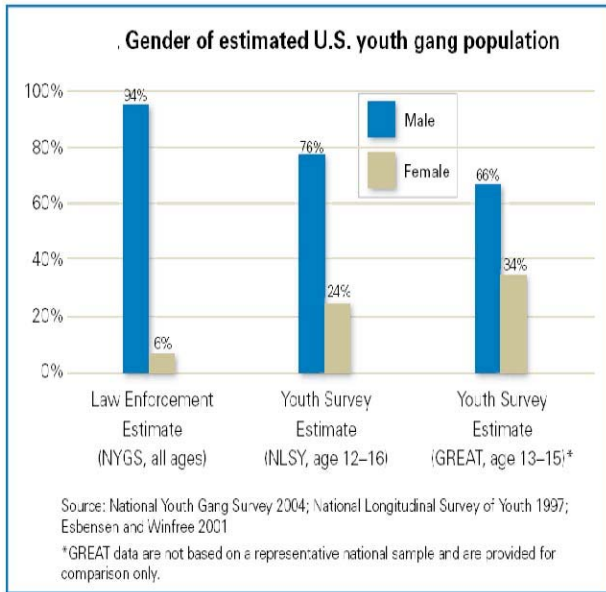
653,520

CITYWIDE SQUARE FEET OF REMOVAL

31,748,959

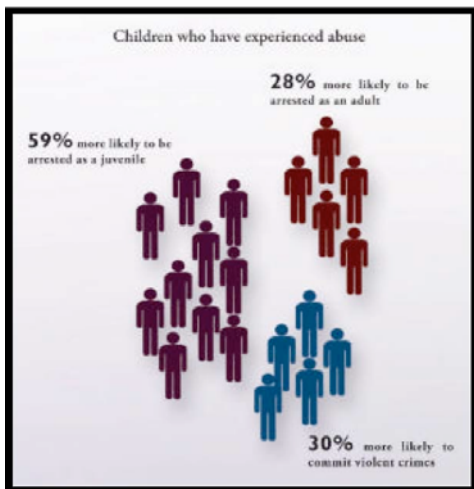
Gangs <http://www.lacity.org/atty/>

Los Angeles Police Department data show that, from 2001 to 2005, gang membership in the City plummeted 33%, and gang violence actually dropped 3.3%. Unfortunately, new data indicate that 2006 saw a spike in gang-related crime – 14% citywide, 3% in Central Los Angeles, 23% in South Los Angeles, and 42% in the San Fernando Valley. Statistics aside, it is clear that gangs remain Los Angeles' most significant crime problem. Thus we must immediately act to address this situation.



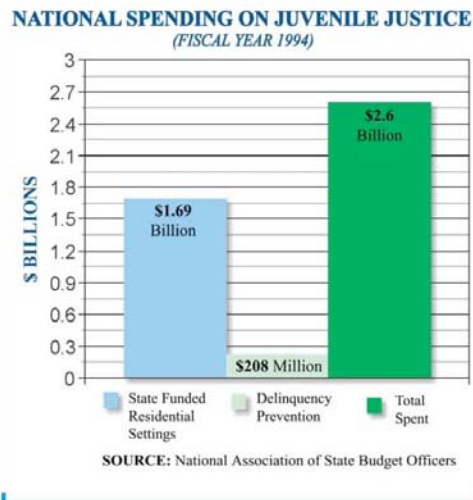
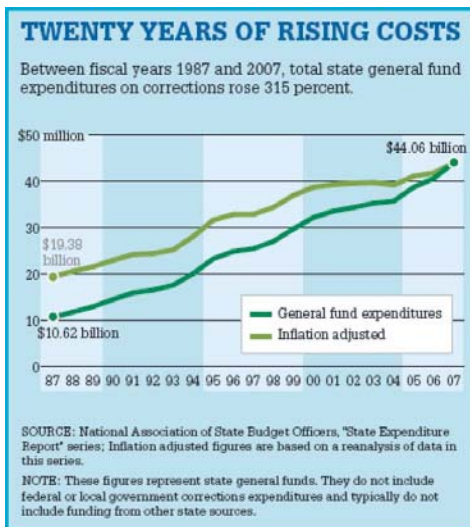
Child Abuse <http://www.lacity.org/atty/>

Child abuse and neglect often leave our children with long-term emotional, psychological, and physical damage. Children who experience abuse and neglect are 59% more likely to be arrested as a juvenile, 28% more likely to be arrested as an adult, and 30% more likely to commit violent crimes (Source: U.S. Department of Justice)



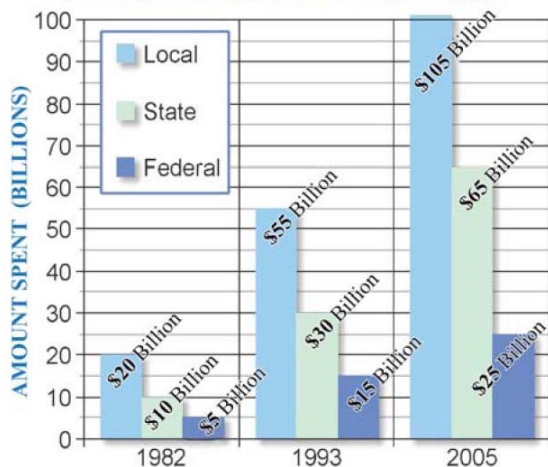
Incarceration <http://www.lacity.org/atty/>

For the first time in the history of America, more than one in every 100 adults are now incarcerated in prison or jail. 1 Even more startling is the fact that the United States incarcerates more people than any other country in the world with more than 2.2 million people behind bars and another 5 million people on probation or parole.2 The growing prison system is impacting every state in America with total state spending on incarceration toppling \$44 billion in 2007, which is up from \$10 billion dollars in 1987.3 Given this reality, prisons are now the fourth-largest state budget item, behind health, education, and transportation. 4 As a result, vital social programs and services, such as education, jobs, housing, and health care, are being drastically cut or eliminated to maintain the booming prison industry. The most recent data for national spending on juvenile justice comes from 1994 and reveals that the states spent approximately \$2.6 billion on juvenile justice expenditures. State funded residential settings, such as detention centers, accounted for about 65% or \$1.69 billion of the total expenditures. As a direct result, delinquency prevention accounted for only 8% of juvenile justice expenditures in 1994, or \$208 million.7 Taking inflation into account and the fact that states now spend billions of dollars annually on corrections and incarceration, these numbers do not adequately reflect the huge gap that currently exists between incarceration costs and prevention and intervention spending.



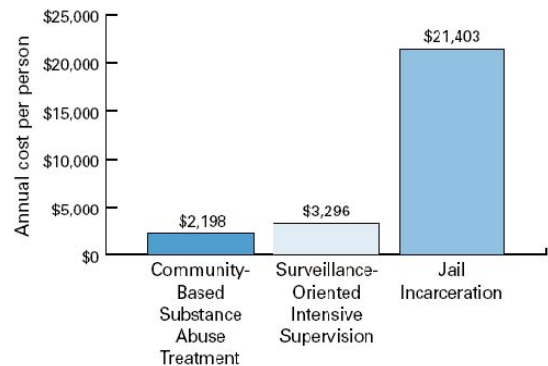
Currently, California leads the world in incarceration rates with more than 175,000 people in our state prisons and county jails.⁸ California spends over 10 billion dollars a year in incarceration costs, exceeding the 7.1 billion dollars that the state spends on both the University of California and the Cal State University Education system's budgets combined.⁹ Los Angeles, the biggest city in California, has spent billions of dollars on incarceration and policing while the number of alleged gangs and gang members continues to increase at an alarming rate. Law enforcement agencies report that there are now six times as many gangs and at least twice the number of gang members in the region than there were twenty years ago.¹⁰ As a result, Los Angeles has the largest number of alleged gangs and gang members in the world, with an estimated 700 gangs and 40,000 gang members in the City of Los Angeles and allegedly over 1,076 gangs and more than 80,000 gang members throughout the County of Los Angeles.¹¹ California taxpayers now spend roughly \$46,000 a year to incarcerate one adult and \$252,000 a year to incarcerate one youth.

DIRECT EXPENDITURE BY LEVELS OF GOVERNMENT 1985 - 2005



SOURCE: US Department of Justice, Bureau of Justice Statistics

Counties can save thousands of dollars by using community-based services over incarceration.



Sources: Aos, Steve, Polly Phipps, Robert Barnoski, and Roxanne Liab. 2001. *The comparative costs and benefits of programs to reduce crime*. Olympia: Washington State Institute for Public Policy; Corrections Yearbook, 2002. Data provided by Sandy Schilling, National Institute of Corrections, September 7, 2007.